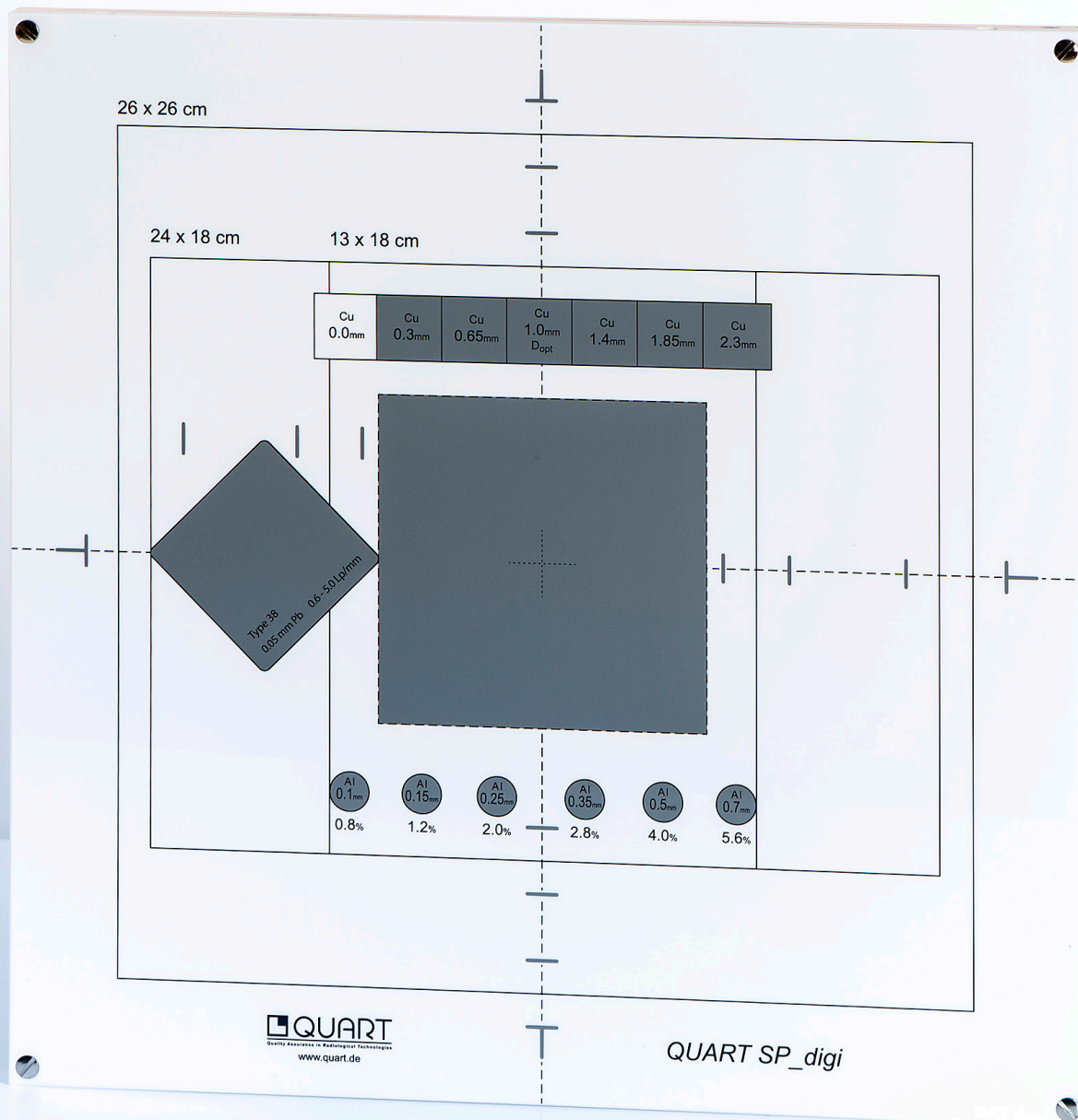


QUART SPdigi

Digital R&F CR/DR Test Phantom



QUART SPdigi

Test Phantom for QA/QC in Digital Radiography & Fluoroscopy
Art. no. 12203

The QUART SPdigi phantom is designed for easy and time-efficient QA/QC performance at Digital Radiography and Fluoroscopy equipment. The phantom complies with DIN 6868-13 & -58 as well as IEC 61223-3-1 & -2-11.

The phantom can be used for QA/QC of radiographic x-ray equipment featuring digital storage screen (CR) or CCD image detectors (DR).

The QA/QC procedure is very straight-forward. After the exposure, the test image is evaluated visually to ensure a high level of image quality of the x-ray equipment.

Phantom Description

- _ Enhanced unique phantom dimension: 33 x 33 x 1.2cm (LxWxH)
- _ Plain structural design to clearly reveal artefacts
- _ Standard field markings for all major Fields-of-View (FoV)
- _ Checks on field sizes ranging from 13x18cm to 30x30cm
- _ Dynamics step wedge (7 Steps: 0 - 2.3 mm)
- _ 6 Low-contrast objects (0.1 - 0.7mm)
- _ Center marker, also for use with QUART ZTB Alignment Tool (Art. 13201)
- _ Integrated High-Quality Line Pair Test (Type 38, 45° arrangement)
- _ Center area for dose measurement and detector signal adjustment
- _ Optional suspension system for vertical positioning available, to be used on wall-mounted CR/DR units (Art. 12210)

Test Parameters

- _ Spatial Resolution / High-Contrast Resolution
- _ Low-Contrast Resolution
- _ Radiation Field Alignment / Congruence between Light and Radiation Field
- _ Geometric Distortion / Image Scale
- _ Image Homogeneity / Uniformity
- _ Detector Signal Adjustment / Signal Normalisation
- _ Artefacts / Image Flaws
- _ Dose Indicator

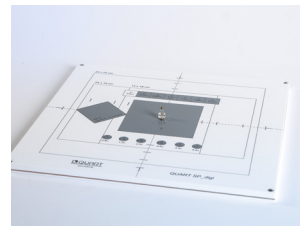
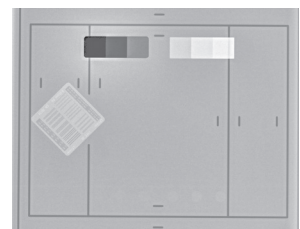
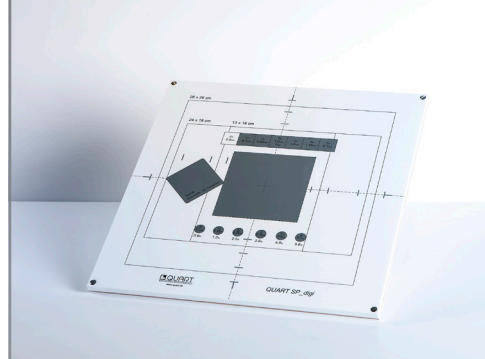
Delivery includes

- ✓ QUART SPdigi Test Phantom
- ✓ Manual

Transport Case with bespoke foam insert optionally available

Available options

QUART SPdI	Art. 12204	Compact Test phantom according DIN 6868-150
QUART RFP150	Art. 12204L	CD/DR Test phantom according DIN 6868-150
QUART PAS	Art. 12210	Phantom suspension system for wall-mounted units
QUART ZTB	Art. 13201	X-ray field axis alignment test tool
QUART NKK	Art. 13207	Low-contrast perceptibility wedge
QUART FST	Art. 13206	Filter stand
QUART al25.0	Art. 13202	Added standard filtration for QA/QC
QUART cu1.0	Art. 13203	Added standard filtration for QA/QC (>100 kV)
QUART didoEASY	Art. 11115	Diagnostic X-ray dosimeter for Service and QA



Options:

